

# Level-Transmitter with internal diaphragm with stainless steel or ceramic element

Accuracy 0,1%, 0,25%, 0,35% und 0,5%

Standard output 4... 20 mA; 2-wire system  
 or 0... 20 mA; 3-wire system  
 or 0...10 VDC; 3-wire system

### Features

small thermal effect  
 good long term stability

### Applications

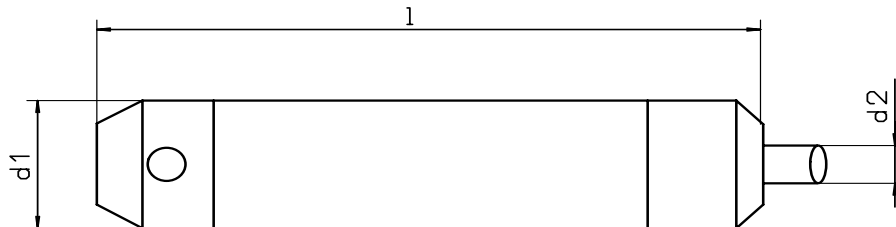
Level measurement in water, fuel and diesel oil  
 water supply, sewage treatment  
 depth or level measurement in wells and open waters  
 environmental engineering



Model	SD-60	SD-61
Accuracy	0,5 % of full scale value 0,35 % und 0,25 % ab 400 mbar 0,1 % ab 160 mbar of full scale value	0,5 % of full scale value
Ranges in bar	0...0,1, ...0,16, 0,25, 0,4, 0,6, 1,0, 1,6, 2,5, 4, 6, 10, 16, 25	0...0,6, 1,0, 1,6, 2,5, 4, 6, 10, 16, 25
Ranges in mWS	0...1, ...1,6, 2,5, 4,0, 6,0, 10, 16, 25, 40, 60, 100, 160, 250	0...6, 10, 16, 25, 40, 60, 100, 160, 250
Overload limit	3-x	3-x
Sensor element	Stainless Steel	Ceramik in monolithical construction
Repeability	< 0,05 % full scale value	< 0,05 % full scale value
Stability per year	< 0,1 % full scale value in rated conditions	< 0,2 % full scale value in rated conditions
Case	CrNi steel	CrNi steel
Wetted parts	CrNi-steel	CrNi steel, ceramik Al <sub>2</sub> O <sub>3</sub>
Electrical connection	PVC-Cable 7,4 mm, or PUR, FEP	
Power supply	12...36 VDC (14...36 VDC for output 0...10 V)	
Power consumption	Output 4...20 mA: signal currency	voltage output 8 mA
Temp. influence	0,2 % / 10 K, zero point and measuring element	
Response time	< 10 ms (within 10% to 90% of full scale value)	
Protection type	IP 68 to EN 60529 /IEC 529	
Temperatures	Medium: -30°C up to 70°C	
Weight	0,2 kg, without cable	

## Dimensions and Design

with internal diaphragm



## Electrical connection

### Two-wire system

4...20 mA

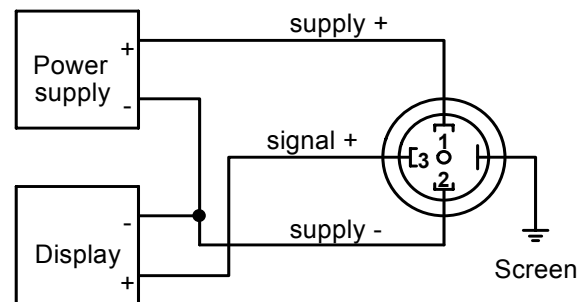
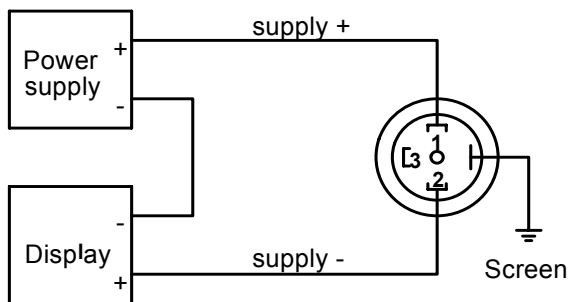
Supply + = white  
 Supply - = brown  
 Ground = yellow/green (Shield)

### Three - wire system

0...20 mA

0...10 V

Supply + = white  
 Supply - = brown  
 Signal + = green  
 Ground = yellow/green (Shield)



Dimensions in mm					
Typ	d1		d2	l	
SD-60	27		7,4	124,5	
SD-61	27		7,4	110	