



Data Sheet  
MR-30 Series  
Pressure Gauges

*Distributed by*



[www. BristolInstruments.com](http://www.BristolInstruments.com)

Bristol Instruments  
90 Canal Street - 4th Floor  
Boston, MA 02114

Toll free  
877-866-8500

# All stainless steel pressure gauges with Bourdon tube with or without glycerine filling

**Nominal size: ND 40 mm (1.6 in)**

**Accuracy: ±1.6% of full scale**

## Features

- Designed for harsh conditions
- High reliability on a longterm basis
- Stainless steel housing and measurement system
- Over-range protection: 1.3 times max.
- Ingress protection: IP 54 unfilled/ IP 65 filled



## Applications

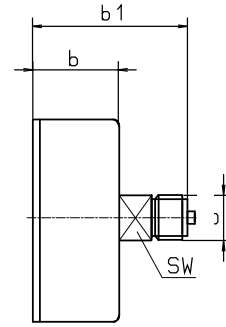
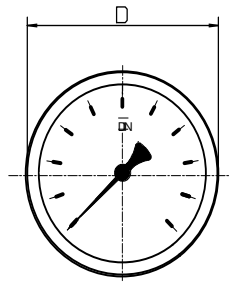
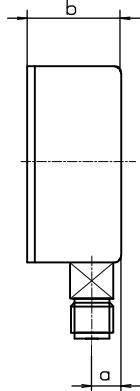
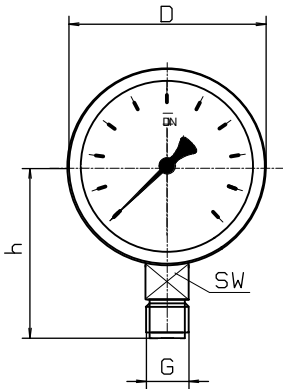
- Chemical and petrochemical industry
- Food and beverage industry
- Pulp and paper industry

	with glycerine filling			
Models and ND	MR-30 40	MR-34 40	MR-30 F 40	MR-34 F 40
Connections	bottom	back, centric	bottom	back, centric
Ranges (psi)	0 to 15, 25, 35, 50, 100, 150, 200, 350, 600, 1,000, 1,500, 2,000, 3,500, 6,000 -15 to 0, -15 to +10, -15 to +20, -15 to +50, -15 to +75, -15 to +100, -15 to +200			
Application	Constant load 3/4 x end of scale value Alternating load 2/3 x end of scale value Short-time : end of scale value			
Case	CrNi steel			
Crimped-on ring	CrNi steel			
Window	Instrument glass			
Dial	Aluminium, white, scale and imprint black			
Pointer	Aluminium, black			
Movement	CrNi steel			
Measuring element	CrNi-steel 316L, up to 100 bar with Bourdon tube, from 160 bar with coil spring			
Connection	SW 14, CrNi steel 316L			
Connection thread	1/8 in NPT, G 1/8 B			
Protection class	IP 65 to EN 60529 / IEC 529			
Temperature range	Medium: -4 to 175°F, Ambient: -13 to 140°F			
Weight	2.5 oz		3.5 oz	

# Dimensions

Connection bottom

Connection back, centric

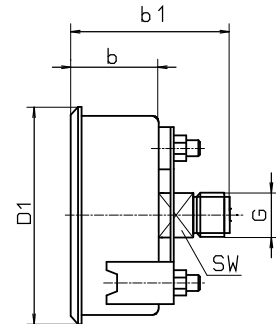
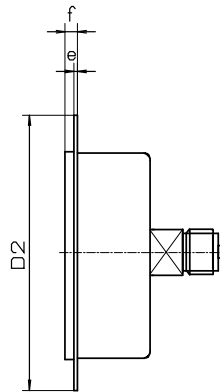
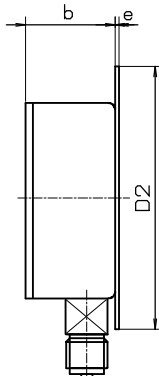
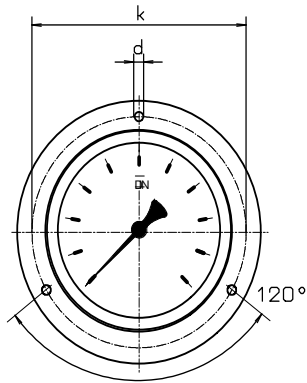


front flange

rear flange

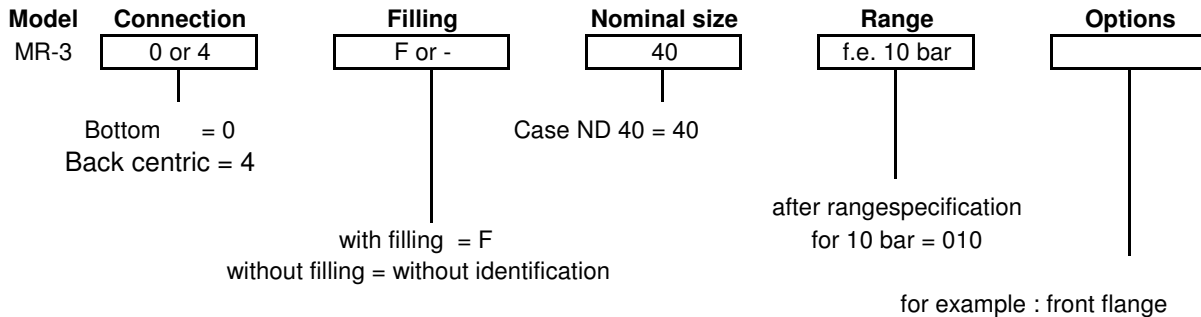
front flange

with triangle bezel a.U-clamp



Dimensions in mm														
Model	NG	D	a	b	b1	h	D1	D2	e	f	k	d	sw	G
MR-30	40	40	10	28	-	35		41,8	0,8		51	3,6	14	G 1/8 B
MR-34	40	40	-	30	47	-	46	41,8	0,8	3,5	51	3,6	14	G 1/8 B
MR-30 F	40	40	10	28	-	35		41,8	0,8		51	3,6	14	G 1/8 B
MR-34 F	40	40	-	30	47	-	46	41,8	0,8	3,5	51	3,6	14	G 1/8 B

## Modelspecification



# All stainless steel pressure gauges with Bourdon tube with or without glycerine filling

**Nominal size: ND 50 mm (2 in)**

**Accuracy: ±1.6% of full scale**

## Features

- Designed for harsh conditions
- High reliability on a longterm basis
- Stainless steel housing and measurement system
- Over-range protection: 1.3 times max.
- Ingress protection: IP 54 unfilled/ IP 65 filled

## Applications

- Chemical and petrochemical industry
- Food and beverage industry
- Pulp and paper industry

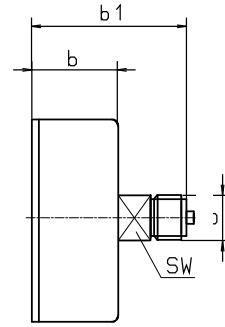
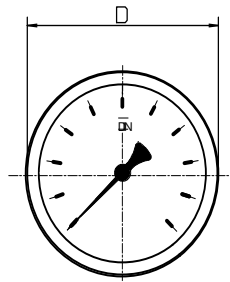
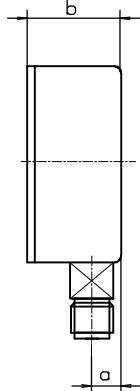
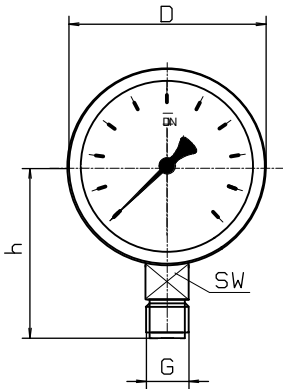


	with glycerine filling			
Models and ND	MR-30 50	MR-34 50	MR-30 F 50	MR-34 F 50
Connections	bottom	back, centric	bottom	back, centric
Ranges (psi)	0 to 15, 25, 35, 50, 100, 150, 200, 350, 600, 1,000, 1,500, 2,000, 3,500, 6,000 -15 to 0, -15 to +10, -15 to +20, -15 to +50, -15 to +75, -15 to +100, -15 to +200			
Application	Constant load 3/4 x end of scale value Alternating load 2/3 x end of scale value Short-time : end of scale value			
Case	CrNi steel			
Crimped-on ring	CrNi steel			
Window	Instrument glass			
Dial	Aluminium, white, scale and imprint black			
Pointer	Aluminium, black			
Movement	CrNi steel			
Measuring element	CrNi-steel 316L, up to 100 bar with Bourdon tube, from 160 bar with coil spring			
Connection	SW 14, CrNi steel 316L			
Connection thread	1/8 in NPT, G 1/8 B			
Protection class	IP 65 to EN 60529 / IEC 529			
Temperature range	Medium: -4 to 175°F, Ambient: -13 to 140°F			
Weight	2.5 oz		3.5 oz	

# Dimensions

Connection bottom

Connection back, centric

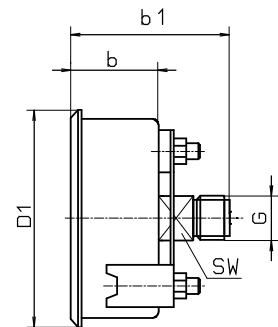
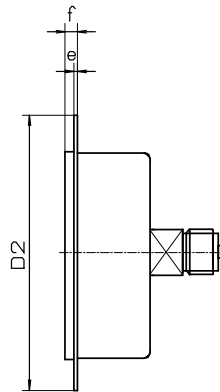
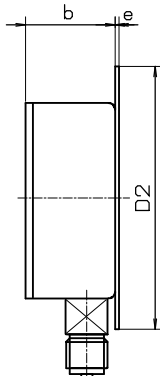
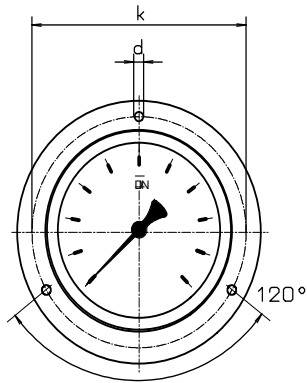


front flange

rear flange

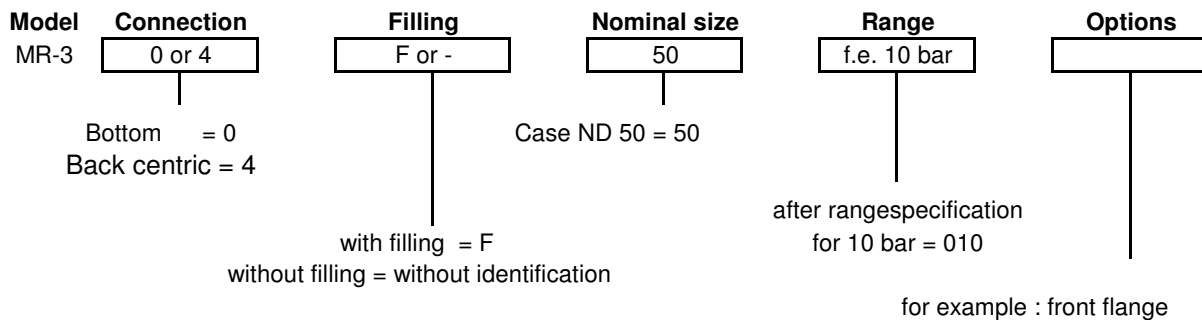
front flange

with triangle bezel a.U-clamp



Dimensions in mm														
Model	NG	D	a	b	b1	h	D1	D2	e	f	k	d	sw	G
MR-30	50	54	10	29	-	45		51	1		60	3,6	14	G 1/4 B
MR-34	50	54	-	31	50	-	54	51	1	8	60	3,6	14	G 1/4 B
MR-30 F	50	54	10	29	-	45		51	1		60	3,6	14	G 1/4 B
MR-34 F	50	54	-	31	50	-	54	51	1	8	60	3,6	14	G 1/4 B

## Modelspecification



# All stainless steel pressure gauges with Bourdon tube with or without glycerine filling

**Nominal size: ND 63 mm (2.5 in)**  
**Accuracy: ±1.6% of full scale**

## Features

- Designed for harsh conditions
- High reliability on a longterm basis
- Stainless steel housing and measurement system
- Over-range protection: 1.3 times max.
- Ingress protection: IP 54 unfilled/ IP 65 filled

## Applications

- Chemical and petrochemical industry
- Food and beverage industry
- Pulp and paper industry

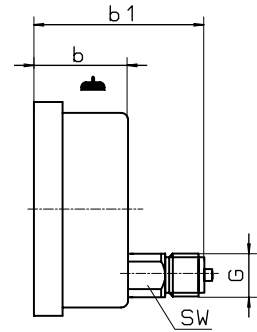
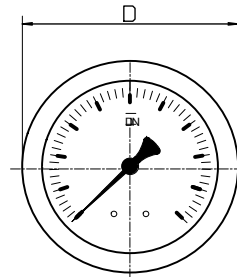
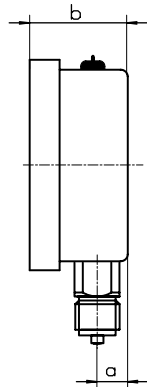
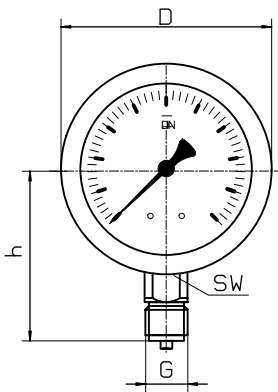


	with glycerine filling			
Models and ND	MR-30 63	MR-35 63	MR-30 F 63	MR-35 F 63
Connections	bottom	back, eccentric	bottom	back, eccentric
Ranges (psi)	0 to 15, 25, 35, 50, 100, 150, 200, 350, 600, 1,000, 1,500, 2,000, 3,500, 6,000, 8500, 14,500 -15 to 0, -15 to +10, -15 to +20, -15 to +50, -15 to +75, -15 to +100, -15 to +200			
Application	Constant load : up to full scale value Alternating load : up to 0,9 x full scale value Overrange protection 1,3 times max.			
Case	CrNi steel			
Bezel	CrNi steel			
Window	Laminated safety glass			
Dial	Aluminium , white ,scale and imprint black			
Pointer	Aluminium, black			
Movement	CrNi steel			
Measuring element	CrNi steel , Bourdon tube <40 bar, helical tube > 60 bar,			
Connection	CrNi steel			
Connection thread	1/4 in NPT, G 1/4 B			
Protection	IP 65 to EN 60529 / IEC 529			
Temperature range	Medium: -4 to 175°F, Ambient: -13 to 140°F			
Weight	7.1 oz		8.8 oz	

# Dimensions

Connection bottom

Connection back, eccentric

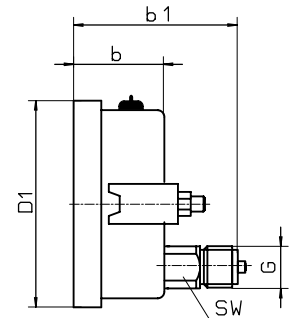
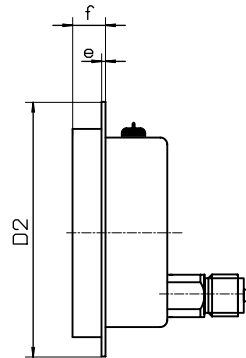
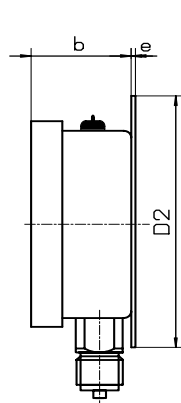
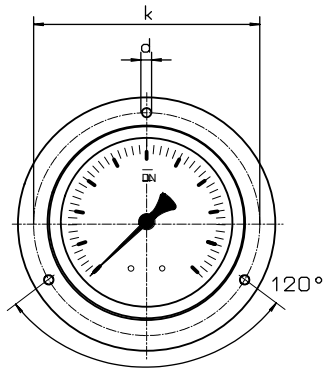


front flange

rear flange

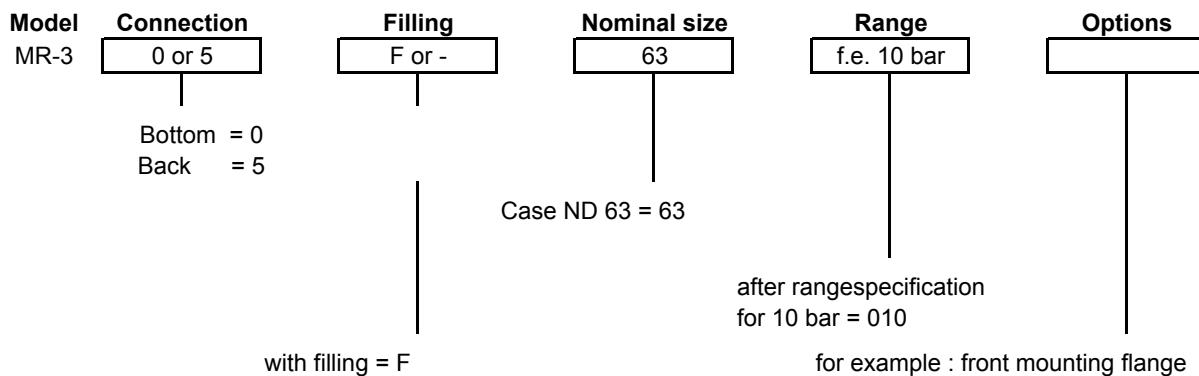
front flange

with triangle bezel a.U-clamp



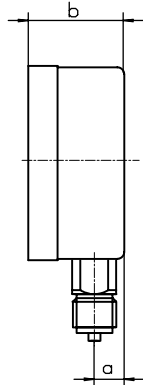
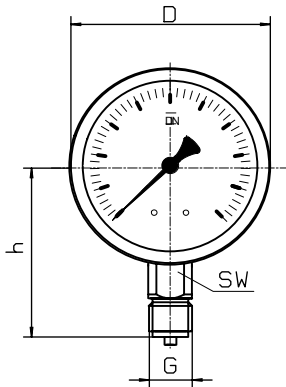
Dimensions in mm														
Model	NG	D	a	b	b1	h		D2	e	f	k	d	sw	G
MR-30	63	68,5	9,5	31	-	53		85	3	16	75	3,7	14	G 1/4 B
MR-35	63	68,5	-	31	60	-		85	3	16	75	3,7	14	G 1/4 B
MR-30 F	63	68,5	9,5	31	-	53		85	3	16	75	3,7	14	G 1/4 B
MR-35 F	63	68,5	-	31	60	-		85	3	16	75	3,7	14	G 1/4 B

## Modelspecification

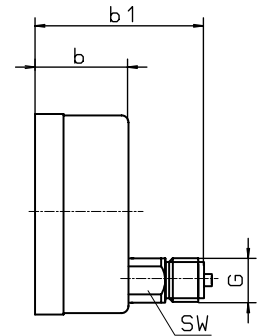
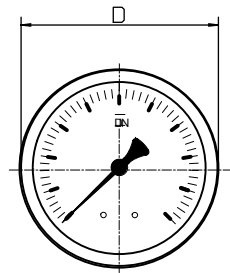


## Dimensions

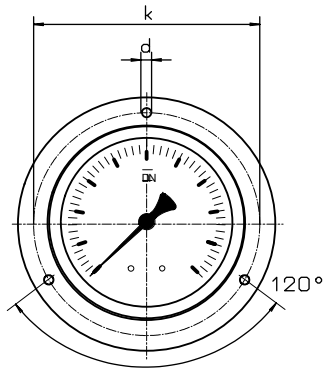
Connection bottom



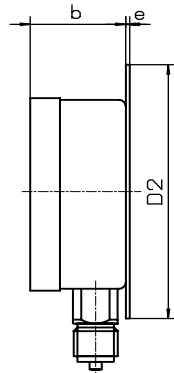
Connection back, eccentric



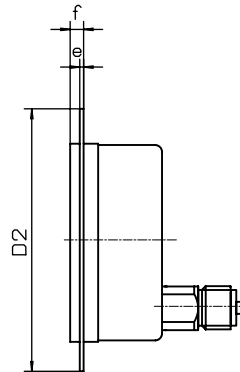
front flange



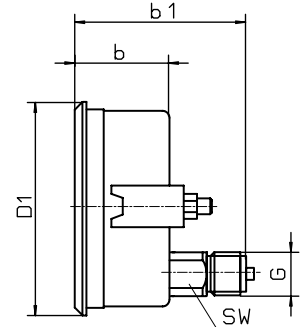
rear flange



front flange



with triangle bezel a. U-clamp



Dimensions in mm														
Model	NG	D	a	b	b1	h	D1	D2	e	f	k	d	sw	G
MR-30	100	101	15	49	-	86	107	132	2	6	116	5	22	G 1/2 B
MR-35	100	101	-	49	85	-	107	132	2	6	116	5	22	G 1/2 B
MR-30	160	160	15	51	-	118	-	196	3	8	178	5,6	22	G 1/2 B
MR-35	160	160	-	51	86	-	166	196	3	8	178	5,6	22	G 1/2 B

### Modelspecification

