



**Data Sheet**  
**TG-30 Series**  
**Gas Thermometer -**  
**Stainless Steel**

*Distributed by*



[www.bristolinstruments.com](http://www.bristolinstruments.com)

Bristol Instruments  
90 Canal Street  
4th Floor  
Boston, MA 02114

Toll free 877-866-8500

## Gas thermometers Stainless steel version

**Dial size: ND of 4 and 6 in.  
(100 and 160 mm)  
Accuracy:  $\pm 1\%$  of full scale**

### Features

Fulfills highest measurement technology requirements, Gas pressure with inert gas filling is physiological harmless  
Short response time  
For aggressive media

### Applications

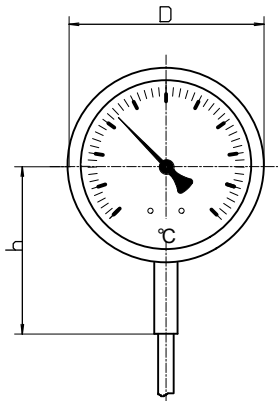
Chemical and petrochemical industry  
Energy economy , Process engineering  
Container and pipe construction  
Mechanical engineering and apparatus manufacture,  
Special customised versions available,  
Food industry



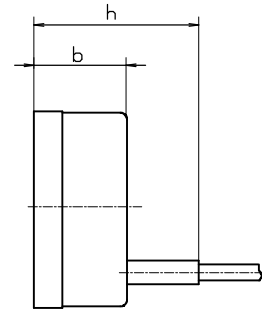
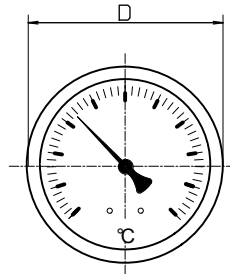
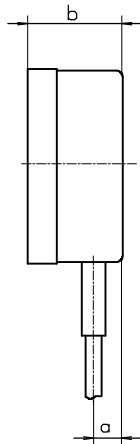
Model and ND	TG-30 100	TG-35 100	TG-30 160	TG-35 160
Connection	bottom	back, eccentric	bottom	back, eccentric
Ranges in °C	-100...+100°C, -50...+50°C, -40...+40°C, -40...+60°C, -30...+50, -20...+60°C, -20...+80°C 0...80°C, 0...100°C, 0...120°C, 0...160°C, 0...200°C, 0...250°C, 0...300°C 0...400°C, 0...500°C, 0...+600°C			
Ranges in °F	0 ...150 °F, 0...200 °F, 0...250 °F, 0...300 °F -50...+130 °F, -40...+160, -30...+120 °F, 20...240°F, 40...400 °F 50...300 °F, 50...500 °F, 100...800 °F, 100...1000 °F, 150...700°F, other at inquiry			
Application	Full scale value			
Case	CrNi steel			
Bezel	CrNi steel ,bayonet			
Window	Glass lens			
Dial	Aluminium white ,scale black			
Pointer	Aluminium, black			
Measuring element	Gas pressure system with inert gas filling			
Display correction	at case , max. 6 %			
Shaft	CrNi steel			
Connection	lock at data sheet T 290			
Length	63, 100, 150, 200, 250, 300, 350, 400, 450, 500 mm, other length possible *)			
Max. pressure	25 bar at shaft , without thermowell			
Protection	IP 55 according EN 60529 / IEC 529			
Weight	0,6 kg	0,6 kg	1,1 kg	1,1 kg

# Dimensions

Connection bottom



Connection ,back eccentric

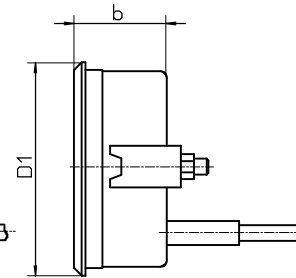
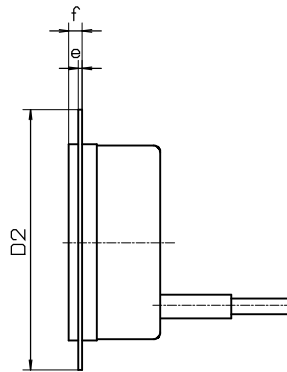
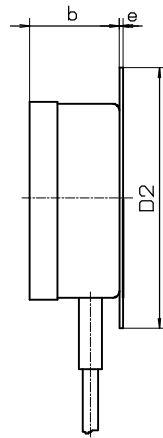
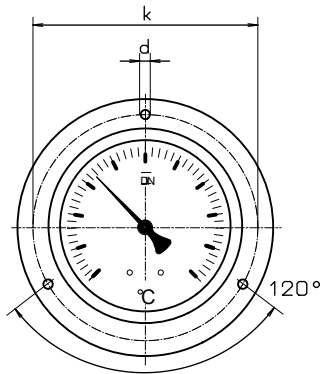


Hole diagram for front flange

rear flange

front flange

with triangular bezel and mounting bracket



Dimensions in mm											
Model	NG	D	a	b	h	D1	D2	e	f	k	d
TG-30	100	101	16	43	99	107	132	2	6	116	4,8
TG-35	100	101	16	43	99	107	132	2	6	116	4,8
TG-30	160	160	16	51	111	-	196	2	6	178	5,8
TG-35	160	160	16	51	111	-	196	2	6	178	5,8

## Model specification

### Model

TG-3

### Connection

0 or 5

Connection bottom = 0

Connection back = 5

### Nominal size

f.e. 100

Case with ND 100 = 100  
Case with ND 160 = 160

### Range

f.e. 120

after Range  
specification or direct  
f.e. 120 °C

### Stem length

f.e. 100

Stem length in mm

### Stem type

f.e. F 2

lock at data  
sheet T 290