

Pressure sensor for Pharma industry with Clam connection according to ISO 2852

Accuracy 0.5 % according to IEC 61298-2

Standard output 4...20 mA; 2-wire system
or 0...20 mA; 3-wire system
or 0...5 VDC; 3-wire system
or 0...10 VDC; 3-wire system

Special features

- An integrated diaphragm seal separated the medium from the pressure sensor by a membrane.
- Quick-connect with tri-clamp sanitary coupling

Applications

For highly viscous and crystallizing media
For all gaseous and liquid pressure media,
which do not attack the measuring system.

Areas of use

Pharmacy
Food Industry

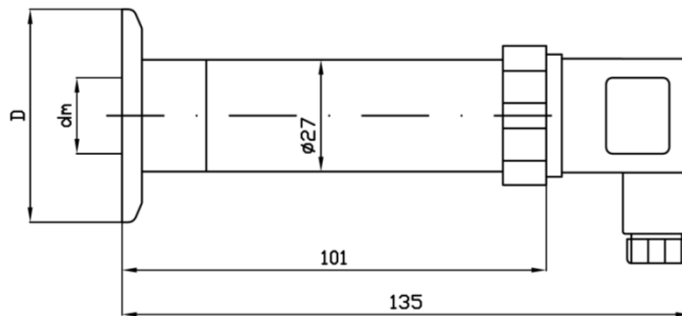


Model	SD-150 25	SD-150 38	SD-150 51	SD-150 63.5
Accuracy	0.5 % of full scale value			
Connection fitting	DN 25 (1")	DN 38 (1 1/2")	DN 51 (2")	DN 63.5 (2 1/2")
PN	PN 40	PN 40	PN 40	PN 25
Display ranges in psi	0...1.5, 2.5, 3.5, 5, 10, 15, 20, 35, 60, 100, 150, 200, 350, 500, 600 -10 to 0, -15 to 0, -15 to +10, -15 to +15, -15 to +50, -15 to +75, -15 to +130 -15 to +200, -15 to 300			
Overload limit	2-times full scale			
Sensor element	piezoresistive stainless steel cell to 350 psi, from 500 psi thin film technology			
Repeatability	< 0.1 % full scale value			
Stability per year	< 0.2 % full scale value in rated conditions			
Case	CrNi steel			
Wetted parts	CrNi steel 316L			
Electrical connection	Plug according to EN 175301-803 (DIN 43 650) / ISO 4401 with junction box			
Power supply	10...36 VDC (12...36 VDC for output 0...10 V)			
Power consumption	For 4 to 20 mA output: signal current, for voltage output: 8 mA			
Permissible load	Current 2-wire: $R_{max} = ((UB-UB_{min}) / 0,02)$ Ohm, voltage: $R_{min} = 10$ K Ohm			
Short-circuit protection	S + to U -			
Reverse polarity protect	U + to U -			
CE-conformity	Pressure Equipment Directive - 97/23/EG EMC-Directive to EN 61 326			
Temp.comp.range	0...80 °C			
Temp. influence	0.2 % / 10 K, zero point and span			
Response time	< 1 ms (within 10% to 90% of F. S.)			
Protection type	IP 65 to EN 60529 / IEC 529, option: IP 67 upon request.			
Temperatures	Medium: -4°F to 212°F (-20°C to 100°C), Ambient: -13°F to 176°F (-25°C to 80°C) for steam sterilization to 300°F (150 °C)			
Weight	0.88 lbs (0.4 kg)			

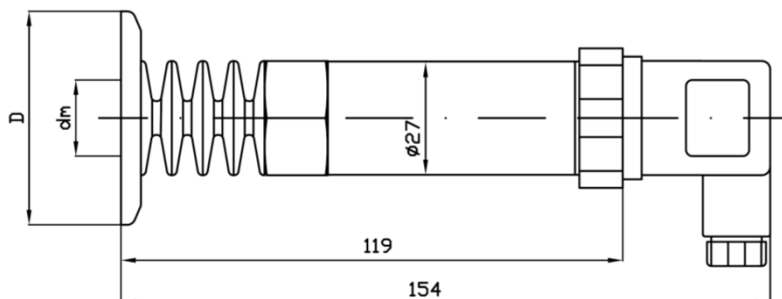
Dimensions and Design

Model SD-150

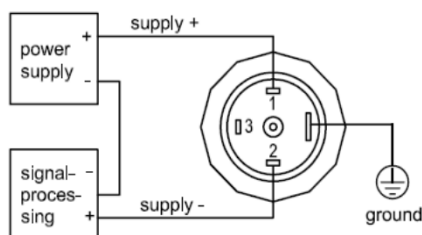
Standard version, IP 65
 Plug according to EN 175301-803 (DIN 43 650) / ISO 4401 with junction box



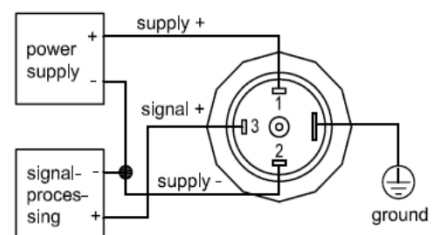
option, cooling element up to 200 °C



Two-wire system 4...20 mA



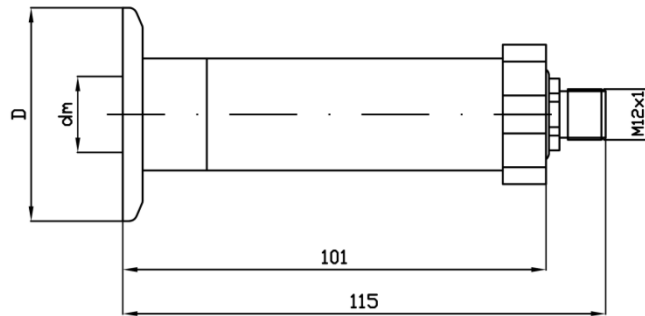
Three-wire system 0...20 mA and 0...5/10 V



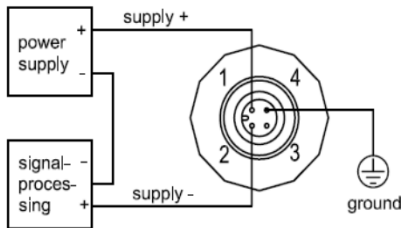
Dimensions and Design

Model SD-150

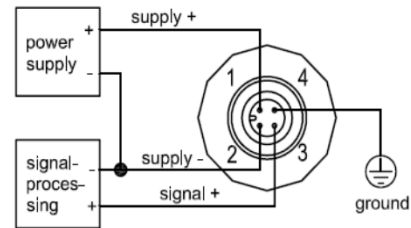
option, IP 67
Circular connector M 12 x 1, 4-pin



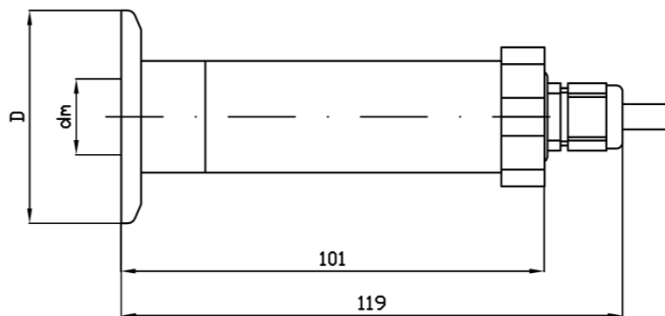
Two-wire system 4...20 mA



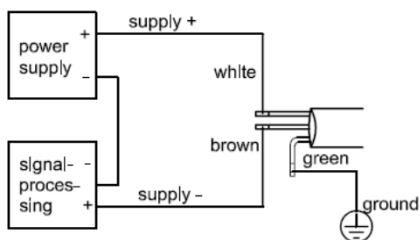
Three - wire system 0...20 mA and 0...5/10 V



option, IP 67 oder IP 68
cable outlet with 2 meters securely connected PVC-cable,

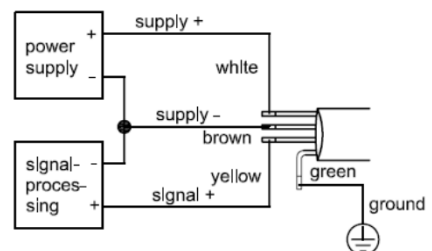


Two-wire system 4...20 mA



cable colours to DIN 47 100

Three - wire system 0...20 mA and 0...5/10 V

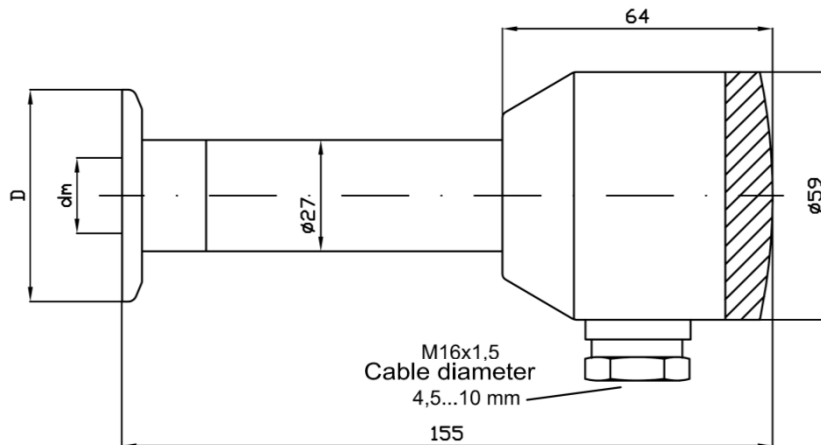


cable colours to DIN 47 100

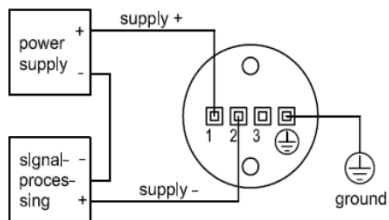
Dimensions and Design

Model SD-150

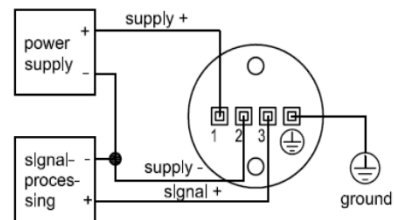
option, IP 67
compact field housing



Two-wire system 4...20 mA



Three - wire system 0...20 mA and 0...5/10 V



Dimensions in mm			
Model	DN	D	dm
SD-150 25	25	50.5	23
SD-150 38	38	50.5	34
SD-150 51	51	64	42
SD-150 63.5	63.5	77.5	54

Exclusively distributed in North America by:



Phone: 877-866-8500
www.bristolinstruments.com
90 Canal Street
Boston, MA 02114