



Data Sheet
SD-60 Series
Pressure Sensors

Distributed by



[www. BristolInstruments.com](http://www.BristolInstruments.com)

Bristol Instruments
90 Canal Street - 4th Floor
Boston, MA 02114

Toll free
877-866-8500

Submersible pressure transmitter for level measurement with stainless steel or ceramic measuring cell



Accuracy: $\pm 0.25\%$ and $\pm 0.5\%$ of range

Special features

- Low temperature error
- Very good long term stability

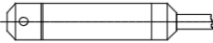
Applications

- Water preparation
- Depth measurements in fountains and in open waters
- Environmental technology

Usage

- For measuring filling level and level measurements in water and clean to slightly polluted liquids.
- For media which do not attack the measuring system, do not crystallize or react viscous.

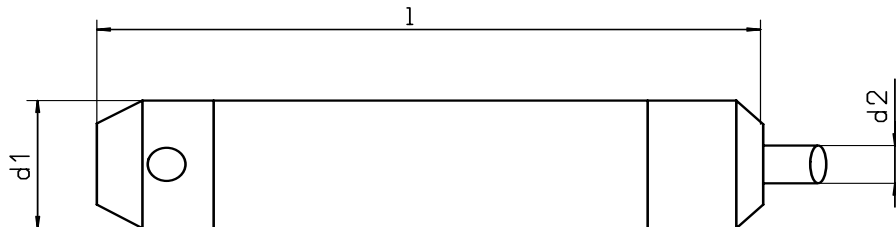


Type	With stainless steel measuring cell		With ceramic measuring cell	
	SD-60	SD-61	SD-65	SD-66
Conn.position				
	Data sheet SD 610		Data sheet SD 650	
Accuracy	0.5 % of full scale	0.25 % of full scale	0.5 % of full scale	
Output signal	4...20 mA			
Diameter	27 mm		27 mm	39,5 mm
Sensor element	Piezoresistive stainless steel measuring cell		Thick layer-ceramic in monolithic construction	
Wetted parts	CrNi-Steel 316L, O-ring viton (FKM)		Ceramic (Al ₂ O ₃), O-ring viton (FKM) CrNi-Steel 316L	
Electr. connection	PVC-cabel 7,4 mm, with integrated air tube as a reference relating to the surrounding air pressure			
Power supply	10...30 V DC (12...30 V for Output 0...5 / 10 V)			
Temperatures	-10°C to 70°C			
Protection class	IP 65 according to EN 60529 / IEC 529			
Ranges Range ID	0...40 mbar = 704	0...60 mbar = 704		
Ranges Range ID	0...100 mbar = 710	0...160 mbar = 716	0...250 mbar = 725	
Ranges Range ID	0...400 mbar = 740	0...600 mbar = 760		
Ranges Range ID	0...1 bar = 001	0...1.6 bar = 002	0...2.5 bar = 003	0...4 bar = 004
Ranges Range ID	0...6 bar = 006	0...10 bar = 010	0...16 bar = 016	0...25 bar = 025
Accessories for stainless steel probe			Order Number	
Terminal Box With integrated pressure balance			AKL 01	
Terminal clamp CrNi-Steel Suitable for all probes with cable (Ø 5.5...10.5 mm)			ASK 03	

Article-no: Type + Range ID + output signal
 Example: SD-60 010 420

Dimensions and Design

with internal diaphragm



Electrical connection

Two-wire system

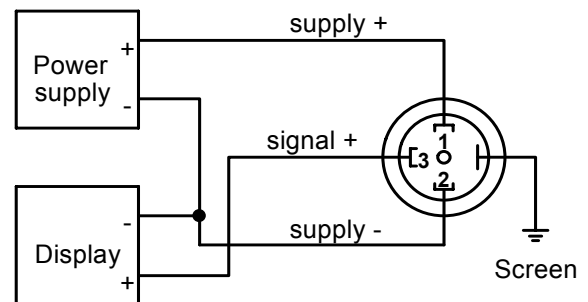
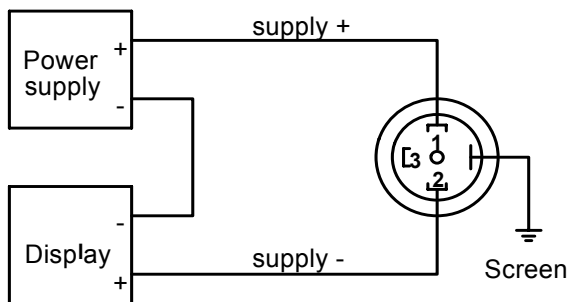
4...20 mA

Supply + = white
 Supply - = brown
 Ground = yellow/green (Shield)

Three - wire system

0...20 mA
 0...10 V

Supply + = white
 Supply - = brown
 Signal + = green
 Ground = yellow/green (Shield)



Dimensions in mm					
Typ	d1		d2	l	
SD-60	27		7,4	124,5	
SD-61	27		7,4	110	